

Formpipe.cloud

How does it enhance your document management solution?



1. Data security

Formpipe Cloud gives your data an extra layer of protection. All data is encrypted and stored on the Microsoft network with secure user access controls and an application gateway-based access method, enabling us to utilise extensive activity logging, monitors and alerts. The safety of your data is still the most critical consideration.



2. Data residency

Formpipe Cloud have the ability to host data and services in a wide range of regions. We also utilise Geo-redundant storage, meaning data is copied 3 times in the same region, and also copied in a secondary paired region. If one location experiences a fault, ranging from simple network problems to a natural disaster, data will be preserved. Even in the event of a disaster, Geo-redundancy guarantees that your data is still accessible and safe.



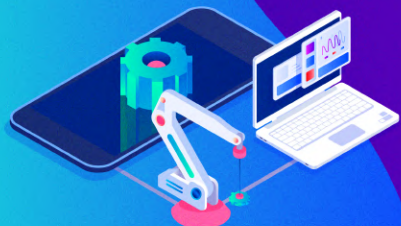
3. Architecture

All external access to Lasernet and Autoform DM is routed via Formpipe Cloud's application gateway, this provides enhanced cyber threat protection and isolates components, meaning software performing core business activities no longer handle bad requests. The back-end servers contain compute nodes, databases, storage accounts and key vaults and all traffic is transported via the Microsoft network, restricting public access.



4. Access

Access to your data and services is more resilient, secure, global, and scalable than before, thanks to our application gateway. This has removed the need for IP Whitelisting, so we are now able to provide access to services securely to anyone, anywhere. For customers that require IP Whitelisting, this is still something we can offer.



5. Upgrade process

New software or cloud platform upgrades are tested by our Development and Cloud Team before release, and are delivered to you as seamlessly as possible. We reserve regular maintenance windows, out of hours, to perform upgrades. This ensures customers on the latest versions of our software, receive new feature releases and bug fixes and remain on support versions of our software for the entire life cycle.